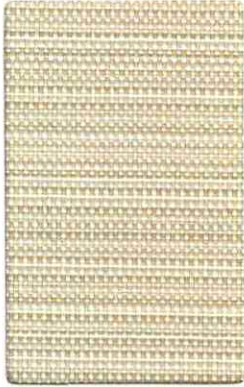




MOMENTUM
T E X T I L E S



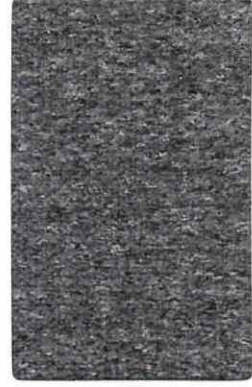
CODE **FSK**: CHALK
GRADE TWO SKIP



CODE **FCL**: SORREL
GRADE THREE COVER CLOTH



CODE **FPA**: MERCURY
GRADE TWO PARENTHESIS



CODE **FFF**: FLANNEL
GRADE THREE FAUX FELT



CODE **FSK**: MUSHROOM



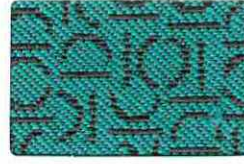
CODE **FSK**: KEYLIME



CODE **FCL**: OAT



CODE **FCL**: PLATINUM



CODE **FPA**: CAPRI



CODE **FFF**: PEBBLE



CODE **FFF**: PUMICE



CODE **FSK**: NICKEL



CODE **FSK**: POOL



CODE **FCL**: ZEST



CODE **FCL**: CYAN



CODE **FPA**: LIME



CODE **FFF**: SPROUT



CODE **FFF**: STONE



CODE **FSK**: CLEMENTINE



CODE **FSK**: SPRITE



CODE **FCL**: FLAME



CODE **FCL**: TAUPE



CODE **FPA**: VIOLET



CODE **FFF**: PATH



CODE **FFF**: BERRY



CODE **FSK**: RUBY



CODE **FSK**: YACHT



CODE **FCL**: SAVOR



CODE **FCL**: VESPER



CODE **FPA**: INK



CODE **FFF**: POOL



CODE **FFF**: CORAL



CODE **FSK**: TERRAIN



CODE **FSK**: CAPTAIN



CODE **FCL**: HICKORY



CODE **FCL**: INDIGO



CODE **FPA**: STEEL



CODE **FFF**: BARK



CODE **FFF**: VIBRANT



CODE **FSK**: FLINT



CODE **FSK**: ONYX



CODE **FCL**: ELECTRIC



CODE **FCL**: GRAPHITE



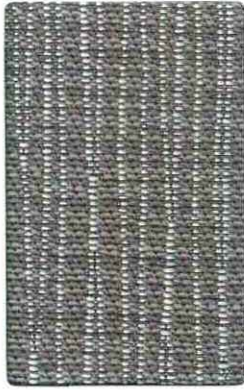
CODE **FPA**: CHARCOAL



CODE **FFF**: LAGOON



CODE **FFF**: CHARCOAL



CODE **FGR:** CHALICE
GRADE TWO GRAPH



CODE **FBM:** CLOUD
GRADE THREE BOOM II



CODE **FHB:** ASPEN
GRADE TWO HABIT



CODE **FTR:** SPROUT
GRADE TWO TRADITION



CODE **FGR:** ALPINE



CODE **FGR:** CORK



CODE **FBM:** MYSTIC



CODE **FBM:** FROTHE



CODE **FHB:** SALT



CODE **FTR:** SOY



CODE **FTR:** STERLING



CODE **FGR:** POPPY



CODE **FGR:** PARROT



CODE **FBM:** TOUCAN



CODE **FBM:** FOLIAGE



CODE **FHB:** DUNE



CODE **FTR:** ASH



CODE **FTR:** SOAR



CODE **FGR:** RUBY



CODE **FGR:** TIDAL



CODE **FBM:** MIRROR



CODE **FBM:** PEWTER



CODE **FHB:** KINDLE



CODE **FTR:** LATTE



CODE **FTR:** THEATER



CODE **FGR:** BARK



CODE **FGR:** WAVE



CODE **FBM:** MUSHROOM



CODE **FBM:** POPPY



CODE **FHB:** BLUEPRINT



CODE **FTR:** HEDGE



CODE **FTR:** MALBEC



CODE **FGR:** LAPIS



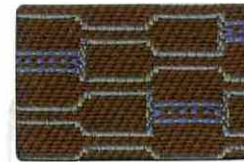
CODE **FGR:** COAL



CODE **FBM:** SAPPHIRE



CODE **FBM:** STOUT



CODE **FHB:** PIER



CODE **FTR:** CLASS



CODE **FTR:** REGAL



CODE **FGR:** ALLOY



CODE **FGR:** ANCHOR



CODE **FBM:** KLEIN



CODE **FBM:** WALL STREET



CODE **FHB:** TAILOR



CODE **FTR:** WELD



CODE **FTR:** HIDDEN

SPECIFICATIONS AND TECHNICAL INFORMATION

WIDTH - PATTERN	CONTENT	ABRASION RESISTANCE (WYZENBEEK)	LIGHTFASTNESS	REPEAT	TENSILE STRENGTH	SEAM SLIPPAGE	FLAMMABILITY*	CLEANING CODE	# OF SKUS
58" BOOM II ☛ ☒ ☛ ☛ ☛ ☛	71% POST CONSUMER RECYCLED POLYESTER, 29% POLYESTER	150,000 D.R.	AATCC16 OPT 3 40 HOURS, CLASS 5.0		WARP: 206.0 FILL: 240.0	WARP: 38.4 FILL: 72.0	CA BULLETIN 117 2013 UFAC CLASS 1 NFPA 260 CLASS 1	WS	21
59" COVER CLOTH ☛ ☒ ☛ ☛ ☛ ☛	56% REPREVE® POST CONSUMER RECYCLED POLYESTER, 44% POLYESTER	200,000 D.R.	AATCC16 OPT 3 40 HOURS, CLASS 4.0		WARP: 244.0 FILL: 203.0	WARP: 71.0 FILL: 49.0	CA BULLETIN 117 2013 UFAC CLASS 1 NFPA 260 CLASS 1	W BC (10:1)	24
56" FAUX FELT ☛ ☒ ☛ ☛ ☛ ☛	62% REPREVE® POST CONSUMER RECYCLED POLYESTER, 38% POLYESTER	75,000 D.R.	AATCC16 OPT 3 40 HOURS, CLASS 4.5		WARP: 215.0 FILL: 198.0	WARP: 123.2 FILL: 118.8	CA BULLETIN 117 2013 NFPA 260 CLASS 1	WS BC (10:1)	16
56" GRAPH ☛ ☒ ☛ ☛ ☛ ☛	75% REPREVE® POST CONSUMER RECYCLED POLYESTER, 25% POLYESTER	170,000 D.R.	AATCC16 OPT 3 40 HOURS, CLASS 5.0	LENGTH: 3.375" WIDTH: 7.5"	WARP: 272.0 FILL: 286.0	WARP: 100.7 FILL: 89.9	CA BULLETIN 117 2013 UFAC CLASS 1 NFPA 260 CLASS 1	W	13
54" HABIT ☛ ☒ ☛ ☛ ☛ ☛	100% POST CONSUMER RECYCLED POLYESTER	50,000 D.R.	AATCC16 OPT 3 40 HOURS, CLASS 4.5	LENGTH: 1.625" WIDTH: 3.0"	WARP: 265.0 FILL: 356.0	WARP: 118.0 FILL: 98.0	CA BULLETIN 117 2013 UFAC CLASS 1 NFPA 260 CLASS 1	WS	7
54" PARENTHESIS ☛ ☒ ☛ ☛ ☛ ☛	50% REPREVE® POST CONSUMER RECYCLED POLYESTER, 50% POLYESTER	165,000 D.R.	AATCC16 OPT 3 40 HOURS, CLASS 4.5	LENGTH: 9.875" WIDTH: 1.125"	WARP: 268.0 FILL: 407.0	WARP: 123.7 FILL: 50.3	CA BULLETIN 117 2013 CA FIRE CODE TITLE 19 NFPA 260 CLASS 1	WS	7
54" SKIP ☛ ☒ ☛ ☛ ☛ ☛	55% POST CONSUMER RECYCLED POLYESTER, 45% POLYESTER	70,000 D.R.	AATCC16 OPT 3 40 HOURS, CLASS 4.0		WARP: 451.0 FILL: 314.0	WARP: 100.0 FILL: 75.0	CA BULLETIN 117 2013 UFAC CLASS 1 NFPA 260 CLASS 1	WS	24
56" TRADITION ☛ ☒ ☛ ☛ ☛ ☛	72% POST CONSUMER RECYCLED POLYESTER, 28% POLYESTER	200,000 D.R.	AATCC16 OPT 3 40 HOURS, CLASS 4.0	LENGTH: .125" WIDTH: .125"	WARP: 438.0 FILL: 311.0	WARP: 100.0 FILL: 78.0	CA BULLETIN 117 2013 UFAC CLASS 1 NFPA 260 CLASS 1 ASTM E84	WS	30

*ACT® Registered Certification Marks

RECOMMENDED CLEANING INSTRUCTIONS:

W: WATER-BASED FOAM, VACUUM, BRUSH

WS: WATER-BASED CLEANING AGENTS OR FOAM

BC: BLEACH CLEANABLE (4 PARTS WATER, 1 PART BLEACH)

DYE LOTS MAY VARY SLIGHTLY FROM SAMPLES SHOWN.

*THIS TERM AND ANY CORRESPONDING DATA REFER TO TYPICAL PERFORMANCE IN THE TESTS INDICATED AND SHOULD NOT BE CONSTRUED TO IMPLY THE BEHAVIOR OF THIS OR ANY OTHER MATERIAL UNDER ACTUAL FIRE CONDITIONS.

TO VIEW ALL COLORWAYS OF THESE DESIGNS AS WELL AS ALL MOMENTUM PATTERNS GRADED INTO THE VERSTEEL STANDARD PROGRAM PLEASE VISIT VERSTEEL.COM OR CONTACT VERSTEEL CUSTOMER SERVICE. TO CONTACT MOMENTUM DIRECTLY, PLEASE CALL 800.366.6839 OR VISIT MEMOSAMPLES.COM.

MOMENTUM
T E X T I L E S

800-366-6839
memosamples.com

