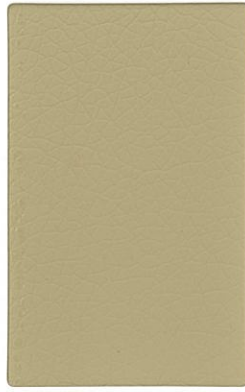
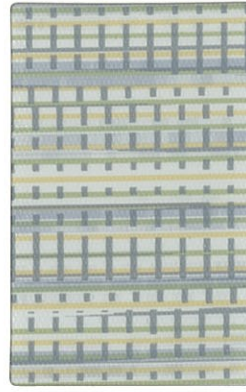




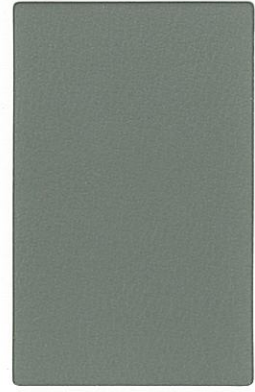
CODE **VBL**: CANVAS
GRADE THREE **BEELINE**



CODE **VCT**: SAND
GRADE TWO **CANTER**



CODE **VZP**: VAPOR
GRADE FOUR **ZIPPED**



CODE **VSI**: SHALE
GRADE FOUR **SILICA**



CODE **VBL**:
SUNDANCE



CODE **VBL**:
OAT



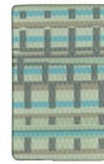
CODE **VCT**:
FOLKSTONE GREY



CODE **VCT**:
SAND DOLLAR



CODE **VZP**:
SHELL



CODE **VZP**:
MIST



CODE **VSI**:
CUMULUS



CODE **VSI**:
BROWNSTONE



CODE **VBL**:
SISAL



CODE **VBL**:
ORIOLE



CODE **VCT**:
POLAR BLUE



CODE **VCT**:
MAIZE



CODE **VZP**:
MOREL



CODE **VZP**:
CRESS



CODE **VSI**:
APPLETINI



CODE **VSI**:
HAZE



CODE **VBL**:
FOSSIL



CODE **VBL**:
EUCALYPTUS



CODE **VCT**:
LUCID



CODE **VCT**:
CITRUS



CODE **VZP**:
TAWNY



CODE **VZP**:
FENNEL



CODE **VSI**:
QUARTZ



CODE **VSI**:
GLADE



CODE **VBL**:
PORTOBELLO



CODE **VBL**:
NIMBUS



CODE **VCT**:
EARTH



CODE **VCT**:
ADOBE



CODE **VZP**:
DOVER



CODE **VZP**:
SPLASH



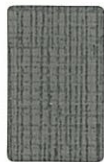
CODE **VSI**:
BISTRO



CODE **VSI**:
SKYWARD



CODE **VBL**:
AUTUMN



CODE **VBL**:
FORGE



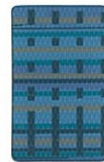
CODE **VCT**:
STORM



CODE **VCT**:
MICA



CODE **VZP**:
FIG



CODE **VZP**:
DELFT



CODE **VSI**:
DARE



CODE **VSI**:
GALLANT



CODE **VBL**:
PARADE



CODE **VBL**:
WALNUT



CODE **VCT**:
INK



CODE **VCT**:
ONYX



CODE **VZP**:
KOMODO



CODE **VZP**:
DEVON



CODE **VSI**:
TERRA



CODE **VSI**:
NERO

SPECIFICATIONS AND TECHNICAL INFORMATION

WIDTH - PATTERN	CONTENT	ABRASION RESISTANCE (WYZENBEEK)	LIGHTFASTNESS	REPEAT	TENSILE STRENGTH	SEAM SLIPPAGE	FLAMMABILITY*	CLEANING CODE	# OF SKUS
54" BEELINE ☘ ☒ ✨ ☻ ☆	100% POLYURETHANE / PVC FREE	500,000 D.R.	AATCC16A 200 HOURS, CLASS 4.5		WARP: 110.0 FILL: 110.0		CA BULLETIN 117, SEC. E NFPA 260 CLASS 1	W BC (4:1)	24
54" CANTER ☘ ☒ ✨ ☻ ☆	100% POLYURETHANE / PVC FREE	240,000 D.R.	AATCC16A 200 HOURS, CLASS 4.5		WARP: 105.0 FILL: 196.0	WARP: 39.4 FILL: 39.1	CA BULLETIN 117, SEC. E UFAC CLASS 1 NFPA 260 CLASS 1	W BC (4:1)	48
54" SILICA ☘ ☒ ✨ ☻ ☆	100% SILICONE	365,000 D.R.	AATCC16 200 HOURS, CLASS 4.5		WARP: 58.9 FILL: 53.5		CA BULLETIN 117, SEC. E UFAC CLASS 1 NFPA 260 CLASS 1	WS BC (4:1)	48
54" ZIPPED ☘ ☒ ✨ ☻ ☆	100% POLYURETHANE / PVC FREE	100,000 D.R.	AATCC16E 200 HOURS, CLASS 4.5	LENGTH: 19.5" WIDTH: 17.625"	WARP: 187.0 FILL: 113.0	WARP: 62.6 FILL: 49.6	CA BULLETIN 117, SEC. E UFAC CLASS 1 NFPA 260 CLASS 1	W BC (4:1)	13

*ACT® Registered Certification Marks

RECOMMENDED CLEANING INSTRUCTIONS:

W: WATER-BASED FOAM, VACUUM, BRUSH

WS: WATER-BASED CLEANING AGENTS OR FOAM

BC: BLEACH CLEANABLE (4 PARTS WATER, 1 PART BLEACH)

DYE LOTS MAY VARY SLIGHTLY FROM SAMPLES SHOWN.

*THIS TERM AND ANY CORRESPONDING DATA REFER TO TYPICAL PERFORMANCE IN THE TESTS INDICATED AND SHOULD NOT BE CONSTRUED TO IMPLY THE BEHAVIOR OF THIS OR ANY OTHER MATERIAL UNDER ACTUAL FIRE CONDITIONS.

TO VIEW ALL COLORWAYS OF THESE DESIGNS AS WELL AS ALL MOMENTUM PATTERNS GRADED INTO THE VERSTEEL STANDARD PROGRAM PLEASE VISIT VERSTEEL.COM OR CONTACT VERSTEEL CUSTOMER SERVICE. TO CONTACT MOMENTUM DIRECTLY, PLEASE CALL 800.366.6839 OR VISIT MEMOSAMPLES.COM.



800.876.2120
812.482.9318 Fax
versteel.com
2332 Cathy Lane Jasper, Indiana 47546
TXMS 17

800-366-6839
memosamples.com