

Guest + Swivel

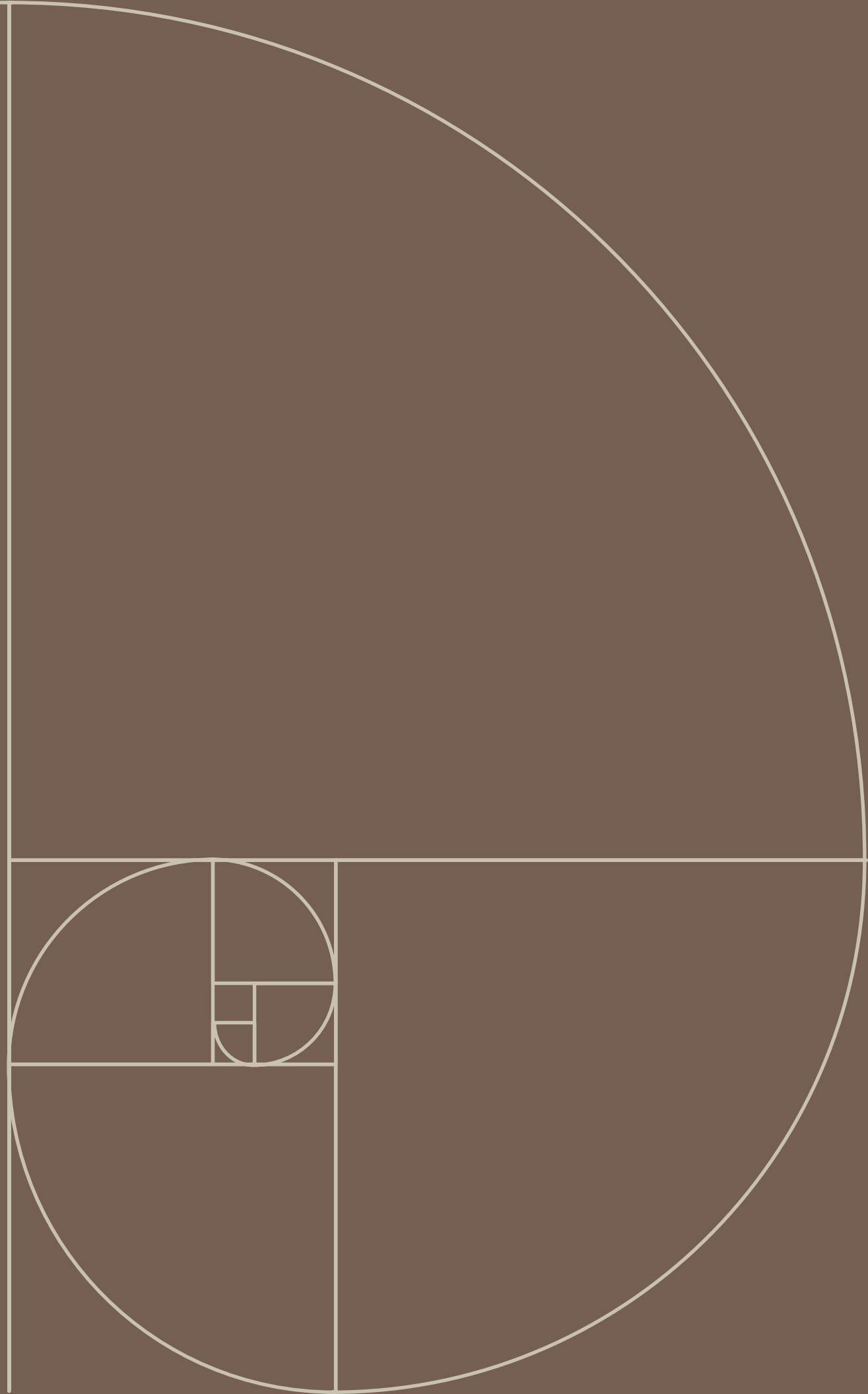
Nerita

WE'RE SURE
Our niche is you.



Where art and comfort
align in perfect harmony.

Nerita
GREAT DESIGN



Favaretto + Partners

Anticipating trends to capitalize on opportunities, Francesco Favaretto and his team draw on curiosity, tenacity and passion to seek innovative solutions across various areas of design.



Great Design

FAVARETTO + DESIGN PARTNERS

Through the design process of Aerie, Versteel and Favaretto established the beginnings of a great partnership. Nerita was a natural next step as it played on the strengths of both the manufacturer and designer. Favaretto drew inspiration from nurture and nature - from a mother cradling her child to the perfect proportions of spiraling shells.

FEATURED

Nerita Swivel + Aerie Table



Smart Choices

DESIGN FOR THE ENVIRONMENT

CARB II Compliant

Intertek Clean Air Gold

Qualifies for LEED + WELL Credits

Exceeds all applicable ANSI/BIFMA standards
for safety and performance.

FEATURED

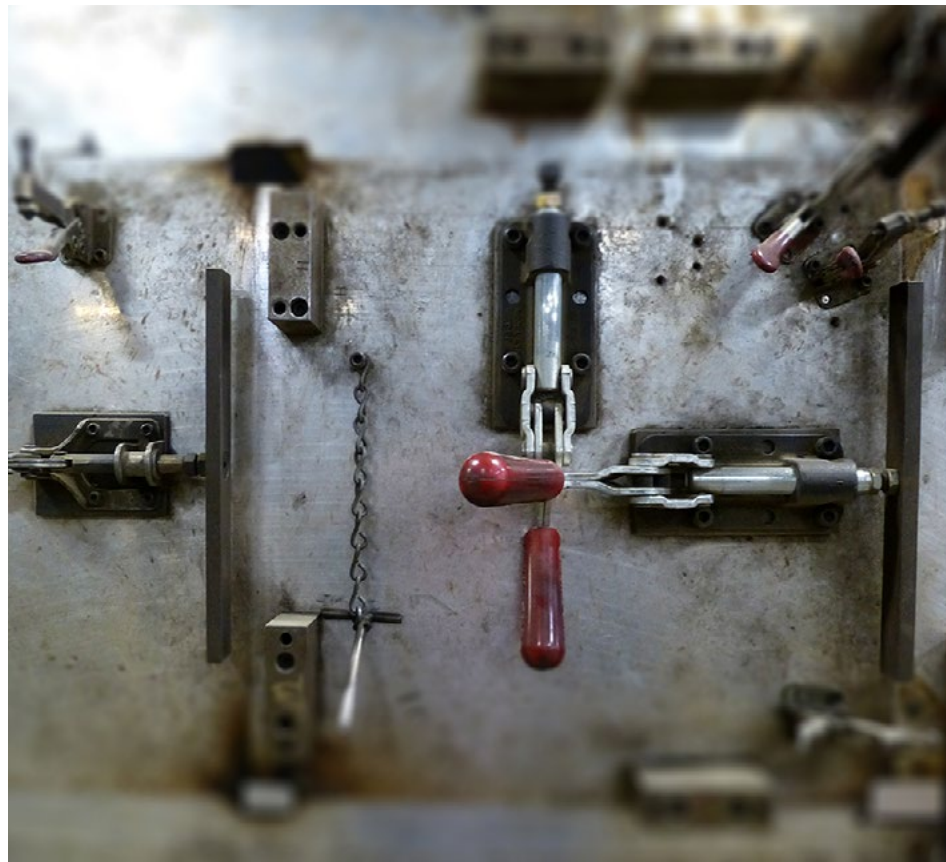
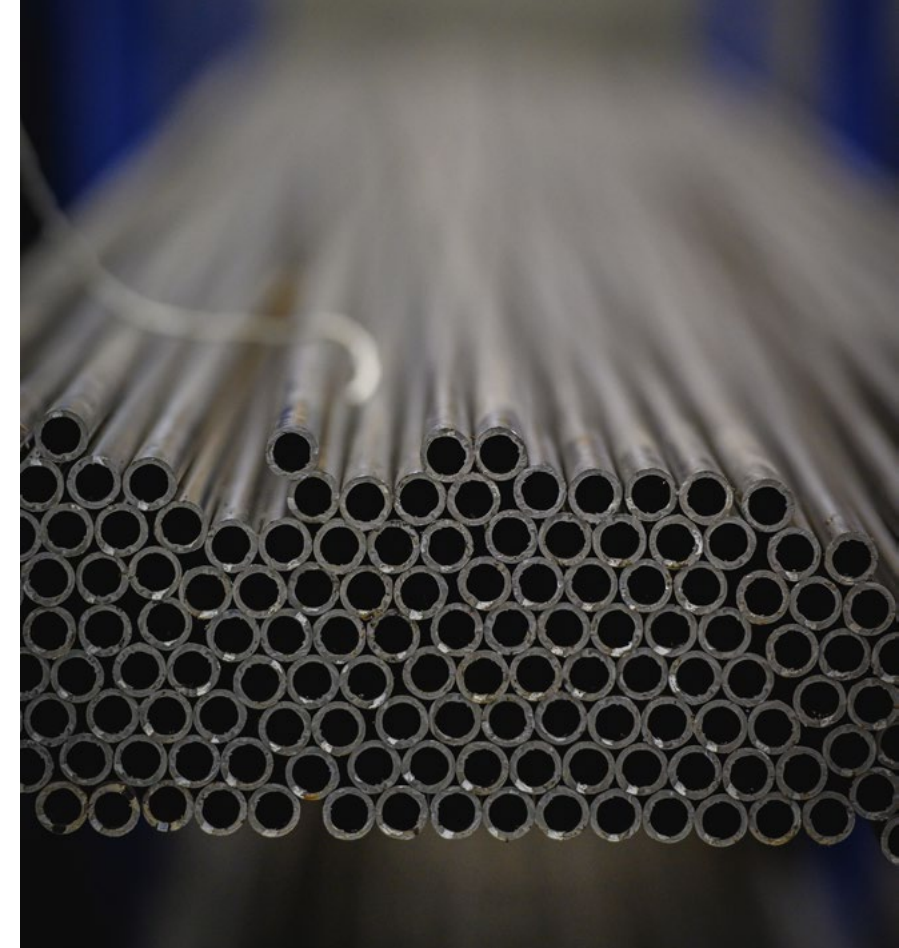
Nerita Sled + Troupe Table



American Steel

COMMITMENT TO QUALITY

Nerita sled and 4-leg frames are manufactured entirely in Indiana by skilled welders and craftsmen. Our steel is American sourced with a recycled content of 95% or greater. Pre- and post-consumer recyclability is one of the most valuable properties of American steel, saving precious raw materials and energy consumption for future generations.



Poly Shells

PRIORITIZING EFFICIENT MATERIALS

Nerita shells are injection molded, which is a naturally low-waste, energy efficient process that reduces CO₂ emissions by up to 30%. These biopolymer shells contain up to 40% recycled material and are 100% compostable or recyclable at end of life. UV-resistant with a durable outer coating, they withstand a long life of high-traffic use.

[VIEW INJECTION MOLDING VIDEO](#)
(featuring QUANTA MAX)



Nerita with Sled or 4-Leg Base

100% RECYCLABLE AT END OF LIFE



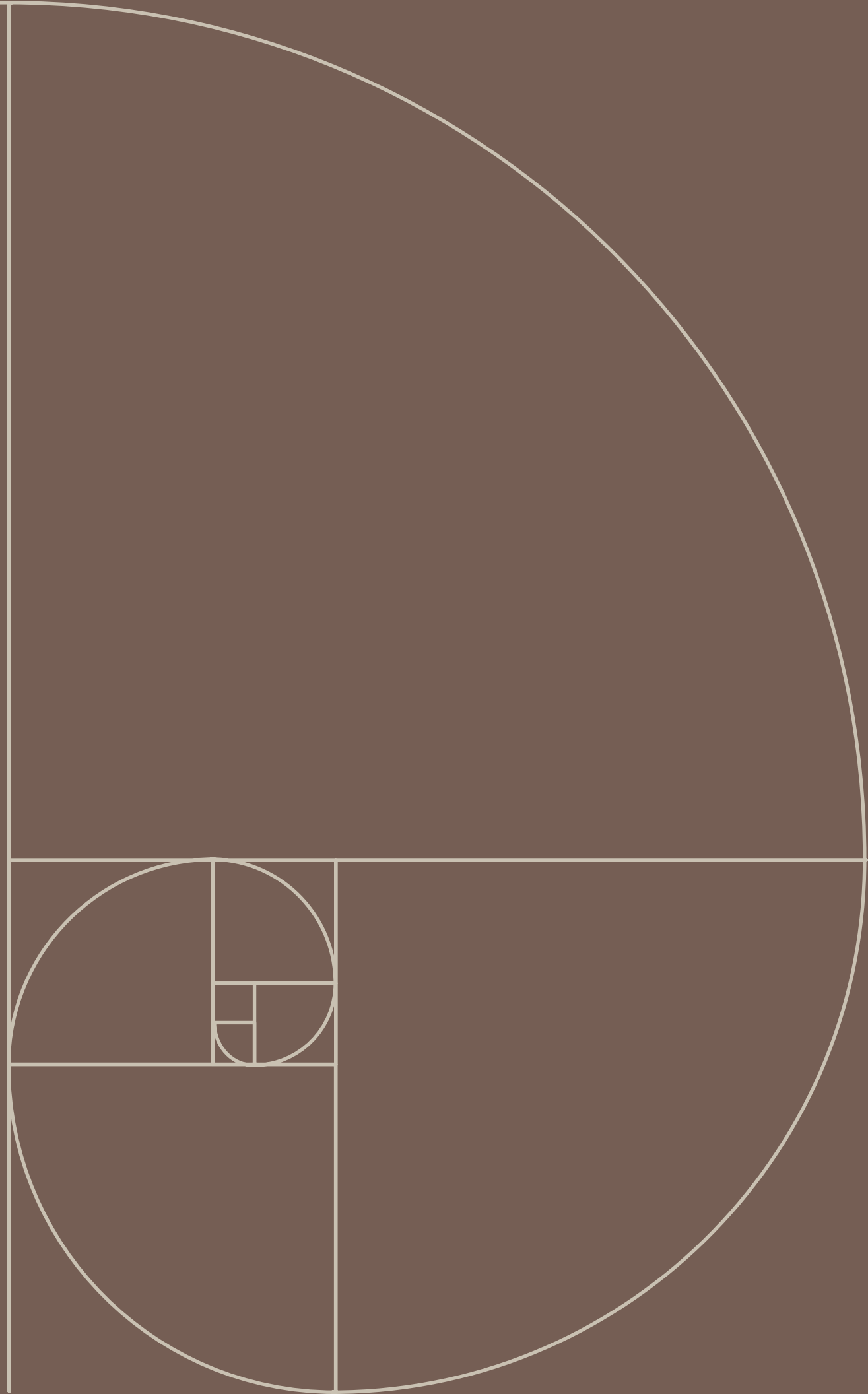
Poly Shell
Up to 40% recycled content.
100% Biocompostable or
recyclable at end of life.

Steel Frame
Up to 95% recycled content.
100% recyclable at end of life
when using non-transparent
powder coats.

Steel is sourced within
500 miles of Jasper IN.
Sled and 4-leg frames are
welded, built and finished
in Indiana.

Powder Coat
Non-transparent powder coats
emit zero VOCs, contain no air
pollutants and have no affect
on the recyclability of steel
components.

Nerita
FEATURES +
MATERIALS



Relaxed Style

Nerita embraces an iconic aesthetic to bring a sense of balance and beauty to functional design. With striking contours and ergonomic curves, its poly shell naturally conforms to the user for uncompromising comfort. Nerita withstands everyday use while maintaining its sophisticated appeal for a variety of spaces.

FEATURED

Nerita Swivel + Paces Table



Poly Shell

Arm or armless

With or without upholstered pad

Single-piece poly shell offered in five colors



Poly Shell

Poly shells are an injection-molded resilient resin with a matte textured surface. Nerita poly shells are offered in five color options.



Near Black



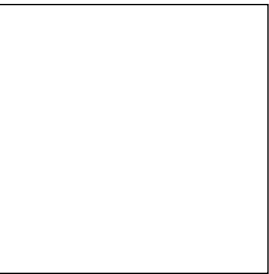
Quarry



Oyster



Sand



Snow

Complements

BEST COMPLEMENTS

Near Black: Black Anodized, Ebony
Snow: White Linen, Snow

CONTRASTING COMPLEMENTS

Quarry: Alloy (and most cool neutrals)
Oyster: Fossil, Stone, Champagne
Sand: Pearl, Stone, Champagne



Near Black



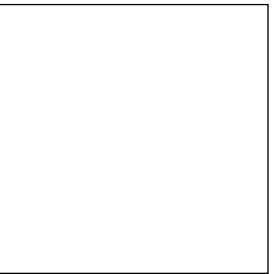
Quarry



Oyster



Sand



Snow



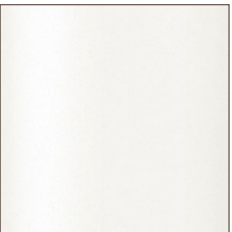
Black Anodized



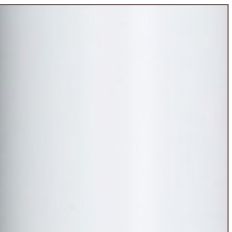
Alloy



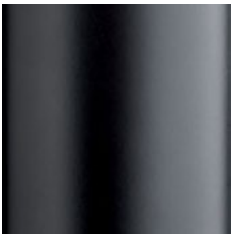
Fossil



Pearl



White Linen



Ebony



Stone



Snow



Champagne

Every eye is different: Confirm with physical samples before specifying.

Base Styles

- Metal Sled Base
- Metal 4-Leg Base
- Fixed Swivel Base with Casters
- Fixed Swivel Base with Glides



Sled



Metal 4-leg



Swivel with Casters



Swivel with Glides

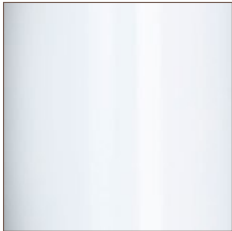
Metal Finishes

Nerita bases may be powdered coated or plated. The fixed swivel bases are also available in polished aluminum. Versteel's standard powder coat offering provides options ranging from color pop to subtle neutrals. Chrome and Nickel plating offer a deep luster finish and extra durability.

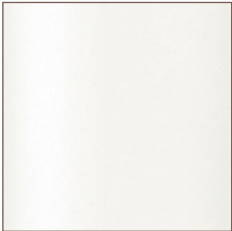
Powder Coat



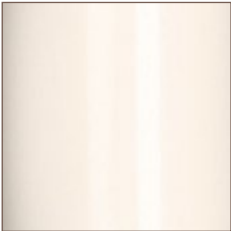
White Linen



Snow



Pearl



Coconut



Mica



Stone



Champagne



Fossil



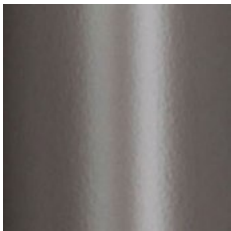
Whisper



Nimbus



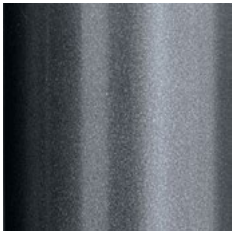
Silver



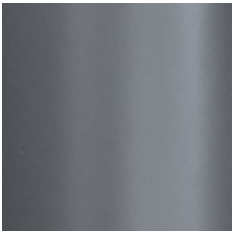
Pebble



Alloy



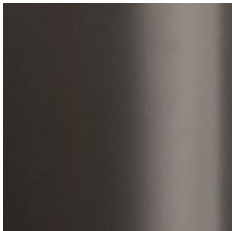
Anthracite



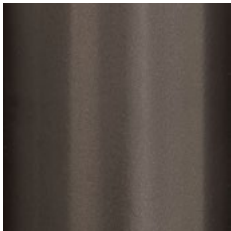
Storm



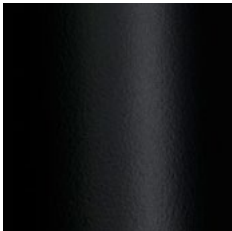
Carbon



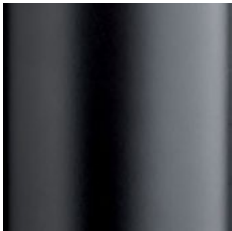
Graphite



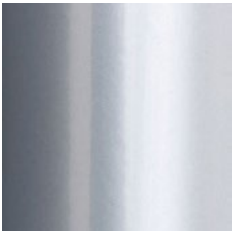
Bronze



Black Anodized



Ebony



Platinum (P)

Metal Finishes

Nerita bases may be powdered coated or plated. The fixed swivel bases are also available in polished aluminum. Versteel's standard powder coat offering provides options ranging from color pop to subtle neutrals. Chrome and Nickel plating offer a deep luster finish and extra durability.



Polished Aluminum
(Swivel base only)



Plated (Sled, 4-leg only)



Chrome



Nickel

Powder Coat



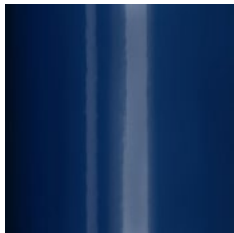
Hope (P)



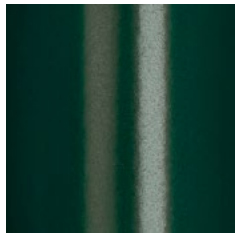
Seaside



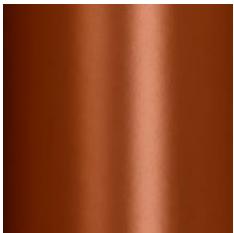
Shipyard



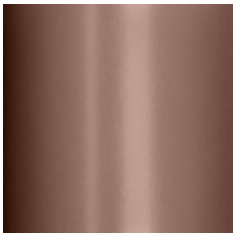
Navy



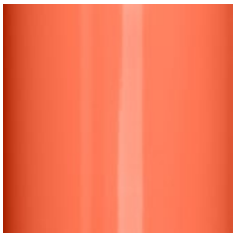
Forest



Terra Cotta



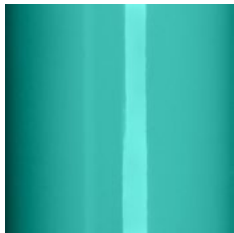
Nutmeg



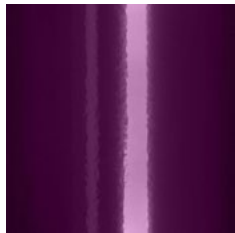
Poppy



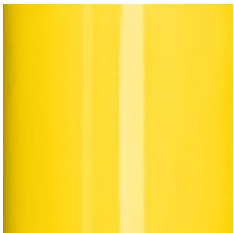
Mint



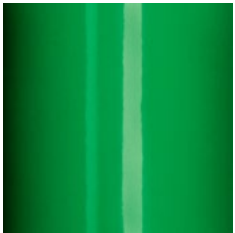
Calypso



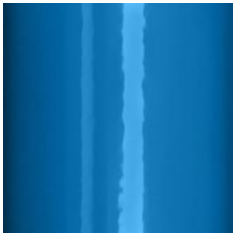
Amethyst



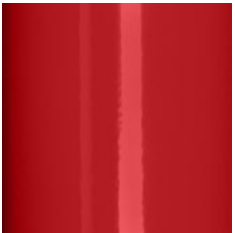
Daffodil



Kelly Green



Royal

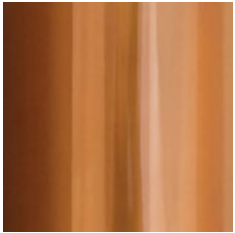


Crimson

Transparent (Sled, 4-leg only)



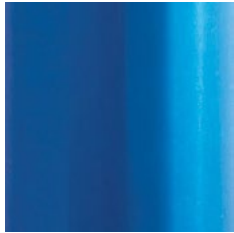
Gold (T)



Copper (T)



Garnet (T)



Pacific (T)



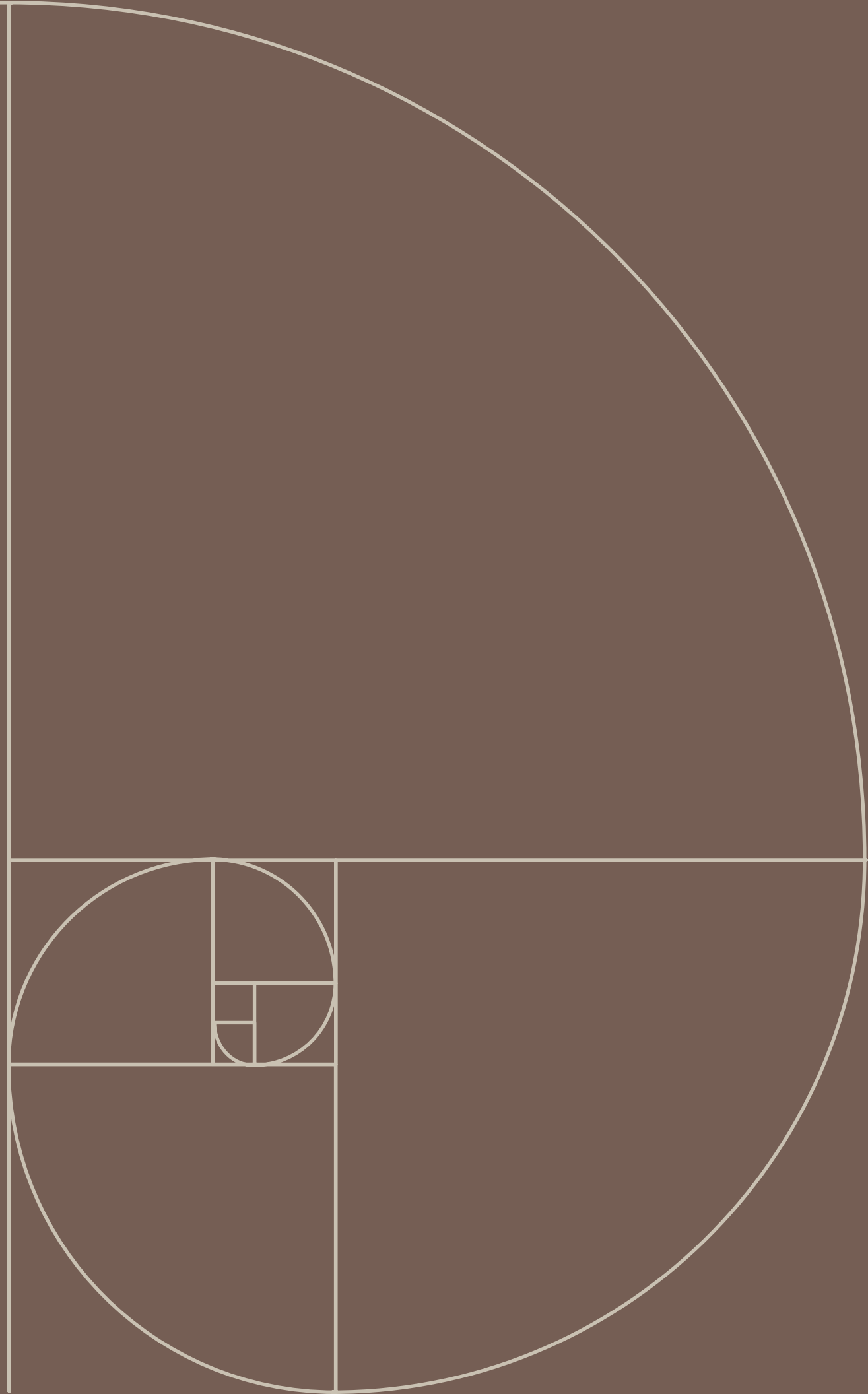
Raven (T)

Clear Coats

Crystal (T) gloss

Matte (T) flat

Nerita
SOLUTIONS



PACES

Inspired by the human form, Paces is thoughtfully designed to provide optimal weight distribution and balance while conveying exceptional lightness. Paces is versatile, with cohesive solutions for training, meeting and dining.

[VIEW PACES ONLINE](#)



AERIE

Aerie's light aesthetic seemingly defies gravity to provide strength, stability and reliability. This large-scale table has centralized, integrated technology to keep everyone powered and productive. Thoughtful design choices include a linear surface detail, contrasting metal colors and seamlessly wrapped powder coat tops.

[VIEW AERIE ONLINE](#)

TROUPE

Multiple table styles with two distinct Troupe bases address varying design and purpose-driven needs. Tapered legs are formed and layered into a unique, inverted profile, while the beautifully refined T-base allows for functional options in modular spaces.

[VIEW TROUPE ONLINE](#)



DECI

Deci won't wobble, wiggle or waver when put to the test in demanding and diverse environments. Underneath the extremely slim profile and delicate appearance is a laser cut, solid steel plate which provides stability and balance. Adjustable glides are standard for leveling in uneven environments.

[VIEW DECI ONLINE](#)

Marketing Tools

[Brochure](#)

[Price List](#)

[Environmental Summary](#)

[Symbols](#)

[VIEW NERITA ONLINE](#)

[Available on CET](#)

[DOWNLOAD VERSTEEL EXTENSION](#)



Our niche is you.

HOW TO ORDER

Contact your Versteel Sales Representative to get started.

OUR MISSION

Since the first Versteel table rolled off the line in our hometown of Jasper, Indiana, Versteel has been about versatility, integrity, impeccable quality and great design. Our commitment to innovation and versatility is unwavering.

CONTACT US

versteel.com

800 876 2120

Made in America