



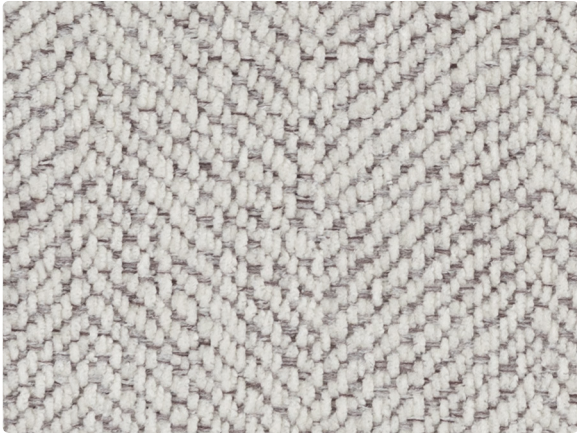
Cambridge Coordinates

---

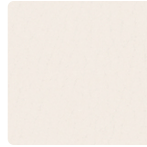
**VERSTEEL**

+

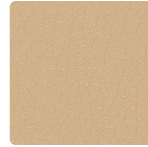
**MAYER**FABRICS



**ADLER**  
640-007 Marble



**DURANGO**  
DU-017 Alabaster



**DURANGO**  
DU-007 Natural



**OMEGA**  
OM-002 Khaki



**SEVILLE**  
642-007 Linen



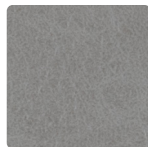
**LANCASTER**  
332-007 Alabaster



**OMEGA**  
OM-017 Bone



**OMEGA**  
OM-027 Stone



**OMEGA**  
OM-006 Quarry



**LANCASTER**  
332-006 Mineral



**DELMAR**  
641-016 Pebble



**DELMAR**  
641-007 Beige



**SEVILLE**  
642-017 Almond



**SEVILLE**  
642-006 Tin



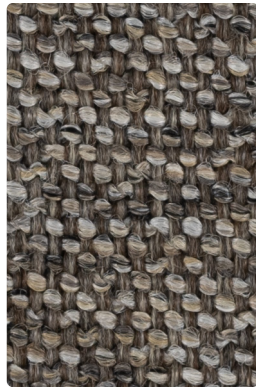
**DELMAR**  
641-000 Coffee



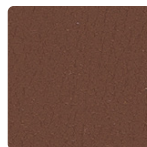
**LANCASTER**  
332-000 Driftwood



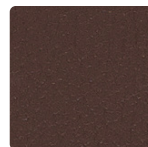
**SEVILLE**  
642-016 Smoke



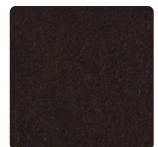
**LANCASTER**  
332-010 Truffle



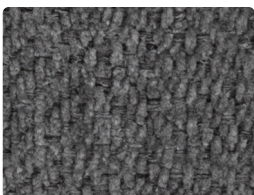
**DURANGO**  
DU-010 Bombay



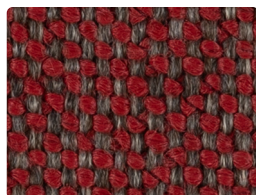
**DURANGO**  
DU-000 Cocoa



**OMEGA**  
OM-050 Truffle



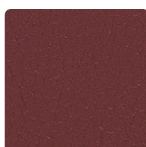
**ADLER**  
640-016 Slate



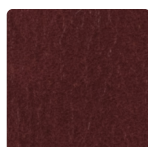
**LANCASTER**  
332-001 Cardinal



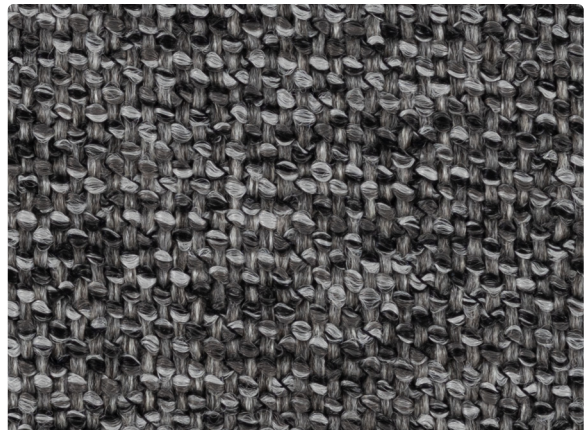
**OMEGA**  
OM-009 Clay



**DURANGO**  
DU-011 Chili

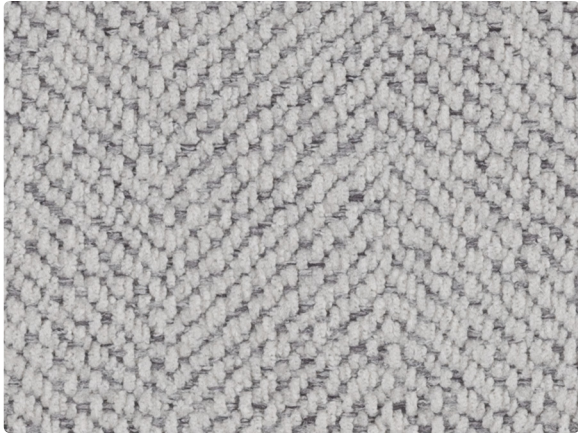


**OMEGA**  
OM-001 Oxblood

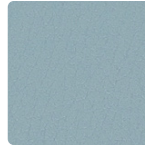


**LANCASTER**  
332-016 Masonry

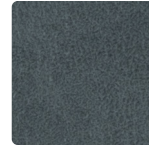
Additional colors are available. Please refer to the Mayer Fabrics website.



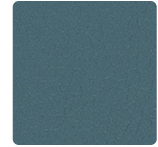
**ADLER**  
640-006 Alloy



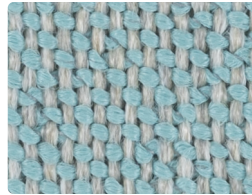
**DURANGO**  
DU-014 Cyan



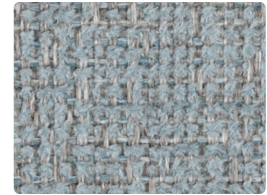
**OMEGA**  
OM-004 Bluestone



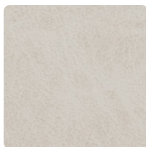
**DURANGO**  
DU-024 Aegean



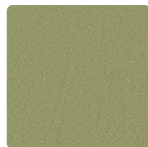
**LANCASTER**  
332-004 Sky



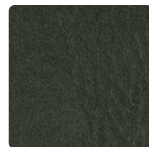
**SEVILLE**  
642-004 Dew



**OMEGA**  
OM-007 Ivory



**DURANGO**  
DU-023 Jade



**OMEGA**  
OM-003 Hunter



**SEVILLE**  
642-003 Spring



**LANCASTER**  
332-003 Olive



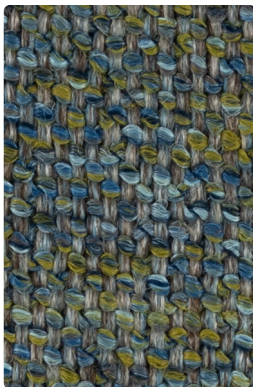
**DELMAR**  
641-003 Pine



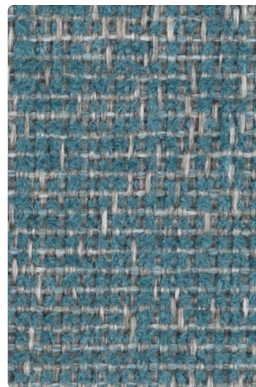
**DELMAR**  
641-004 Water



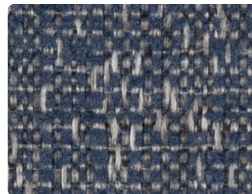
**ADLER**  
640-004 Iceberg



**LANCASTER**  
332-014 Ocean



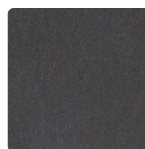
**SEVILLE**  
642-014 Sea



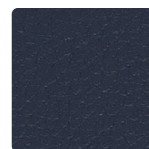
**SEVILLE**  
642-024 River



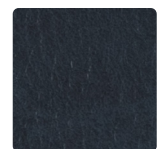
**DELMAR**  
641-014 Marine



**OMEGA**  
OM-016 Granite



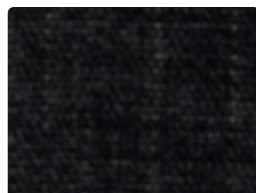
**DURANGO**  
DU-004 Sapphire



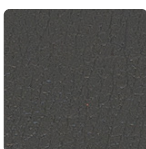
**OMEGA**  
OM-014 Midnight



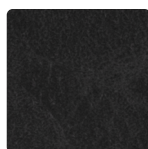
**ADLER**  
640-014 Lake



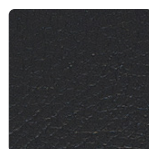
**DELMAR**  
641-006 Black



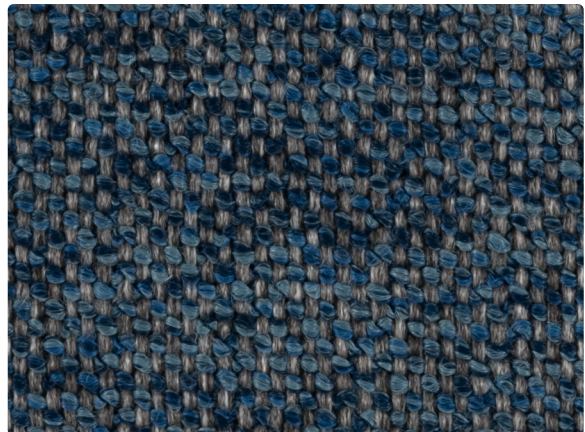
**DURANGO**  
DU-016 Char



**OMEGA**  
OM-026 Onyx



**DURANGO**  
DU-006 Black



**LANCASTER**  
332-024 Denim

Additional colors are available. Please refer to the Mayer Fabrics website.

# TECHNICAL INFORMATION

## Cambridge Coordinates

Pattern 54"	Content and Backing	Weight/ Linear Yd.	Pattern Repeat	Finish	Abrasion Wyzenbeek	Light- Fastness	Flammability	Cleaning Code	Grade
<b>ADLER</b> <i>Directional Railroaded</i>	100% Polyester Backing: Polyester	16.5 oz.	0.625" H, 1.875" V	Stain Repellent - PFAS Free	60,000^ Double Rubs	40 hours	Cal. 117-2013 NFPA 260/UFAC Class 1	S	3
<b>DELMAR</b> <i>Directional</i>	100% Polyester Backing: Acrylic	19.7 oz.	None	Stain Repellent - PFAS Free	60,000^ Double Rubs	40 hours	Cal. 117-2013 NFPA 260/UFAC Class 1	S	3
<b>DURANGO™</b>	78% Vinyl - Phthalate Free face, 22% Polyester backing	30 oz.	None	Soil & Stain Resistant Top Coat with Ink Resistant Technology	1,000,000^ Double Rubs	650 hours	Cal. 117-2013 NFPA 260/UFAC Class 1 BIFMA	BC, CFC	3
<b>LANCASTER</b> <i>Directional</i>	97% Solution-Dyed Olefin, 3% Solution-Dyed Polyester Backing: Acrylic	21.9 oz.	0.188" H, 0.188" V	Inherently Cleanable	50,000^ Double Rubs	40 hours	Cal. 117-2013 NFPA 260/UFAC Class 1	WS, BC, IC	3
<b>OMEGA</b>	43% Polyurethane Polycarbonate face, 57% Polyester backing	25.4 oz.	None	WRITE AWAY® - Soil & Stain Resistant Top Coat with Ink Resistant Technology	250,000^ Double Rubs	200 hours	Cal. 117-2013 NFPA 260/UFAC Class 1	WS, BC, CFC	3
<b>SEVILLE</b> <i>Directional</i>	67% Solution-Dyed Olefin, 33% Solution-Dyed Polyester Backing: Acrylic	12.5 oz.	None	Inherently Cleanable	50,000^ Double Rubs	40 hours	Cal. 117-2013 NFPA 260/UFAC Class 1	WS, BC, IC	3

### REDUCED ENVIRONMENTAL IMPACT

These products are GREENGUARD Gold Certified for low chemical and particle emissions to UL standard UL 2818 and may contribute to LEED certification.

No FR Additives No Antimicrobial/Antibacterial Additives PFAS Free

### CARE AND CLEANING INFORMATION

S: Solvent WS: Water/Solvent Cleaner IC: Inherently Cleanable

CFC: Coated Fabrics Cleaning – Refer to Mayer website for complete cleaning info.

Bleach Cleanable – 1 part bleach, 9 parts water = 10% bleach, 90% water solution. **Do not clean/disinfect fabric for longer than 10 minutes using the 10% bleach solution. Always rinse promptly with clean water after applying the bleach solution. Failure to do so will void any and all warranties.**

### DYE TRANSFER DISCLAIMER

Certain clothing and accessory dyes (such as those used on denim jeans) may migrate to lighter colors. This phenomenon is increased by humidity and temperature and is irreversible. Mayer Fabrics will not assume responsibility for dye transfer caused by external contaminants. Please check compatibility when using this product in combination with painted or varnished surfaces.

### ADDITIONAL INFORMATION

^Abrasion test results exceeding ACT Performance Guidelines are not an indicator of product lifespan. Multiple factors affect fabric durability and appearance retention.

Warranty: Please refer to the Mayer website for warranty information by pattern.

Custom Colors: All patterns can be custom colored. Minimum yardage applies.

Complete and current product information available at [mayerfabrics.com](http://mayerfabrics.com).



These fabrics meet or exceed these ACT performance guidelines.

\*Certification Marks owned by ACT®

CAMBCCD ©2023 MF0126

# VERSTEEL

# MAYER FABRICS